

# Door Handles



**GCC**<sup>®</sup>



Door Handles are manufactured by using heavy wall high grade SUS 304 Stainless steel tubing, precision bending, Cutting & welding process and polished meticulously to meet industry standards.

**PSS**: Polished Stainless Steel.

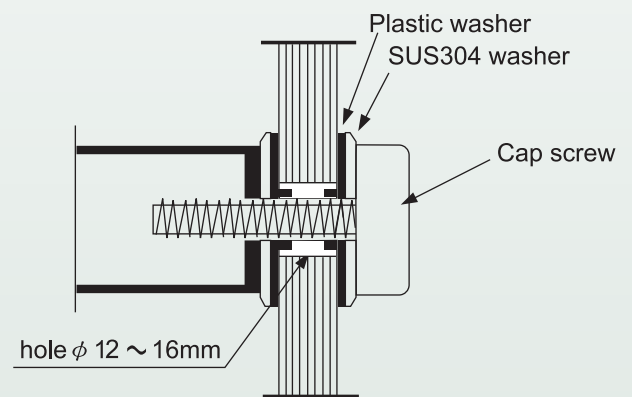
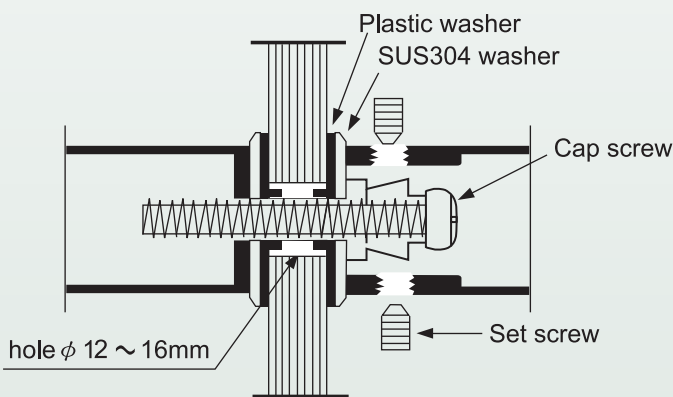
**Available Finishes:** **SSS**: Satin Stainless Steel.

**TP** : Titanium Plated.

(PVD Coated as 24K Gold Color)

**For Glass Door**

**For Glass Door**

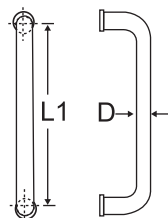


Back-to-back  
Both sides handle.

Flat cap screw on  
Single sided handle upon request.

• Longer Screw for wooden doors, aluminium frame doors, steel doors available by order.

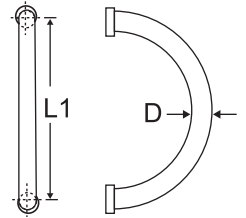
**H01**



SIZE(mm)

L1(C/C)	D
305	25
425	25
305	32
350	32
450	32
600	32

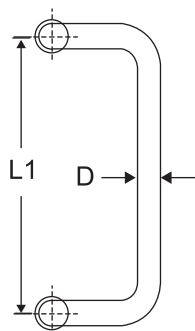
**H02**



SIZE(mm)

L1(C/C)	D
200	25
200	32

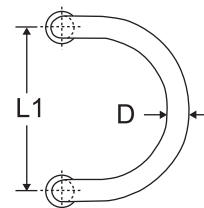
### H03



SIZE(mm)

L1(C/C)	D
305	25
305	32
350	32
450	32

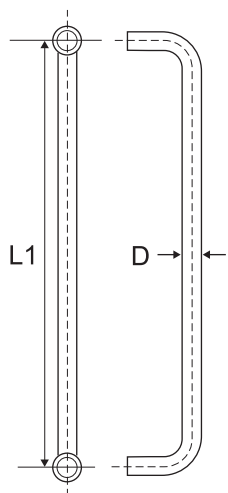
### H04



SIZE(mm)

L1(C/C)	D
200	25
200	32
250	32
305	25
305	32
350	32

### H05



(A)

(B)

SIZE(mm)

L1(C/C)	D
305	25
450	32
600	32

SIZE(mm)

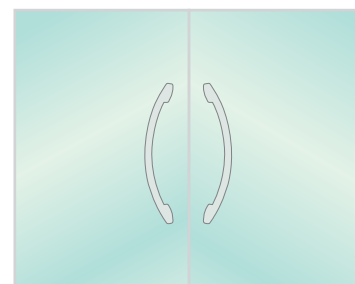
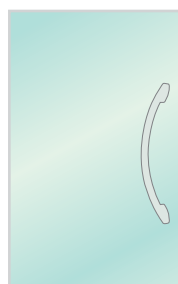
L1(C/C)	D
305	25
450	32
600	32

### H06

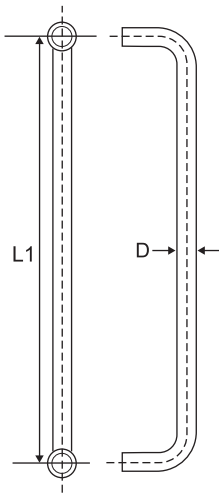


SIZE(mm)

L	L1(C/C)	D
570	500	32



### H07 (A)



W/Solid Acrylic

### (B)

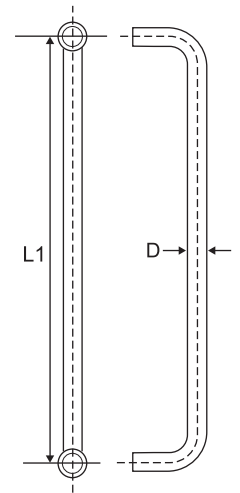


W/Solid POM

### H08



W/Solid Acrylic



SIZE(mm)

L1(C/C)	D
305	25
450	32

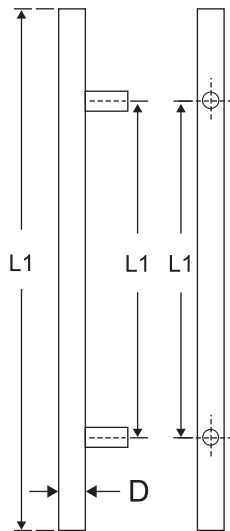
SIZE(mm)

L1(C/C)	D
305	25
450	32

SIZE(mm)

L1(C/C)	D
305	25
450	32

### H09

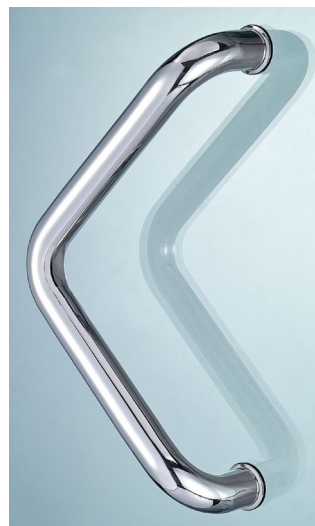


W/Solid Acrylic

SIZE(mm)

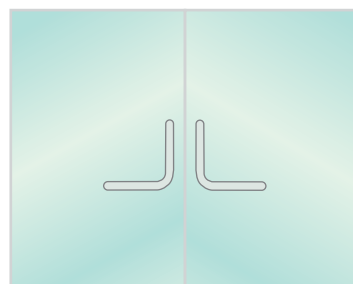
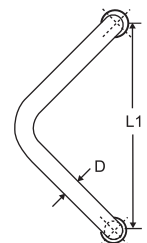
L	L1(C/C)	D
380	305	25
560	450	32

### H10

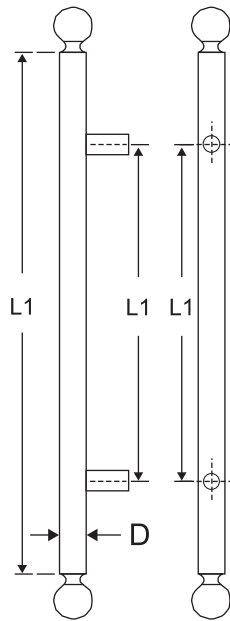


SIZE(mm)

L1(C/C)	D
305	25
305	32
350	32



### H11

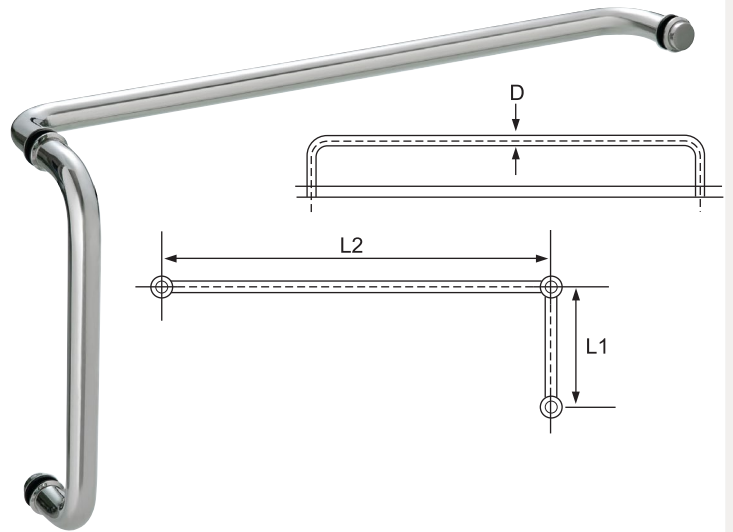


W/Crystal Knobs

SIZE(mm)

L	L1(C/C)	D
510	305	25
670	450	32

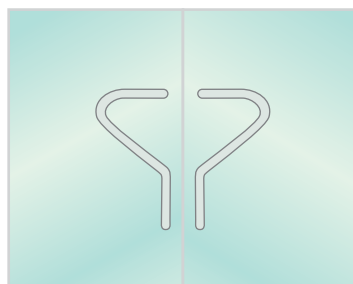
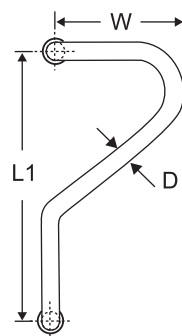
### H12



SIZE(mm)

L1	L2	D
275	425	25
305	600	25
305	600	32

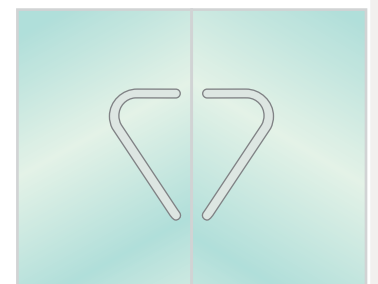
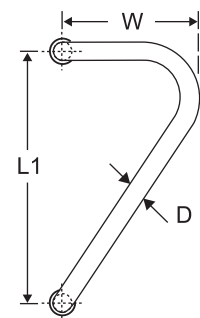
### H13



SIZE(mm)

L1(C/C)	W	D
500	250	32

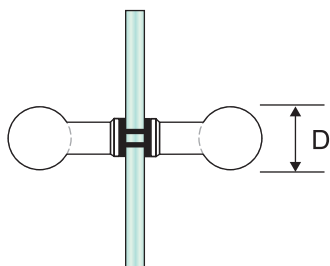
### H14



SIZE(mm)

L1(C/C)	W	D
600	285	32

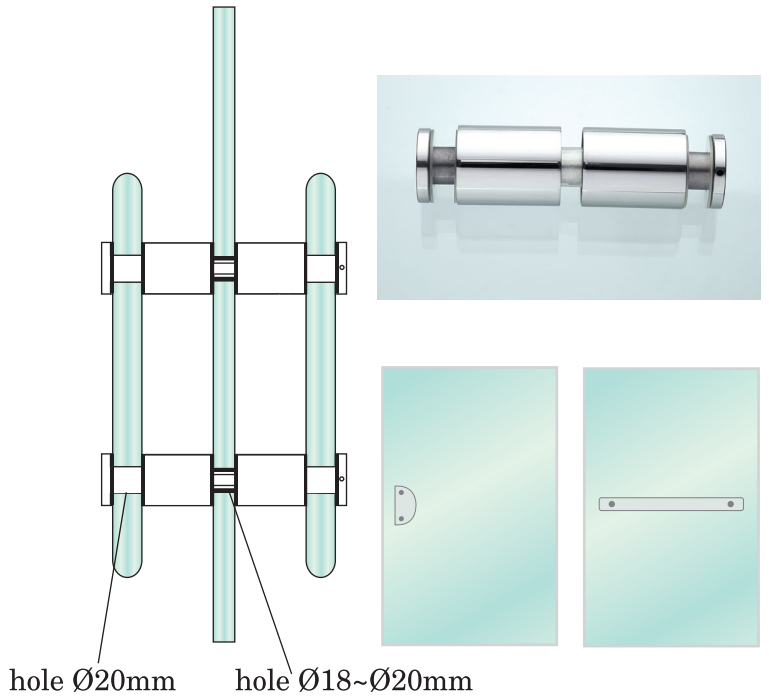
## H15



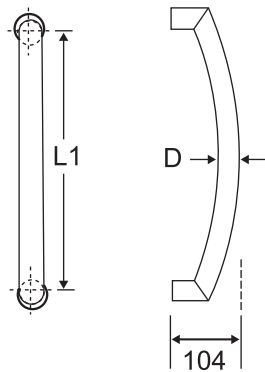
D: 38mm, 50mm.

## H19 Handle Connector

- Fixing assemblies for custom made Glass handles.
- Suitable for 10, 12, 15 thickness glass door.



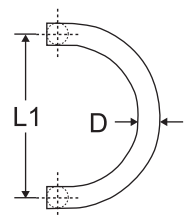
## H17



SIZE(mm)

L1(C/C)	D
425	27

## H18



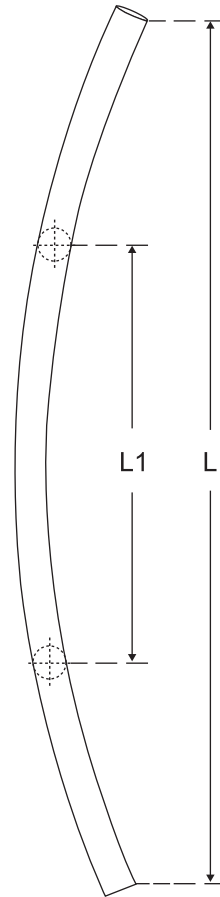
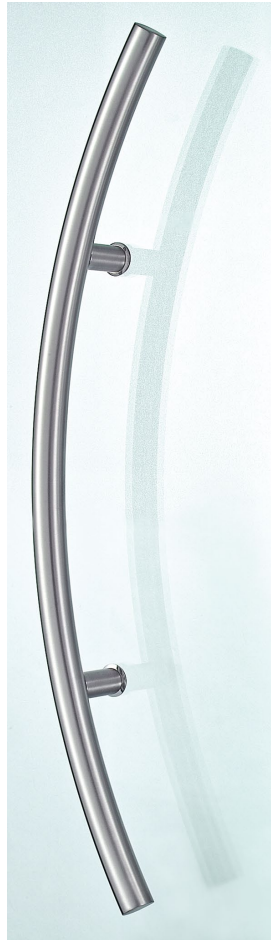
SIZE(mm)

L1(C/C)	D
350	34

## H16

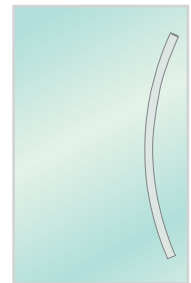


## H20

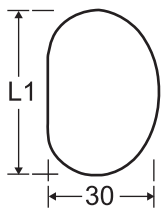


SIZE(mm)

L	L1(c/c)	D
800	450	32
1500	800	32



## D type tubing

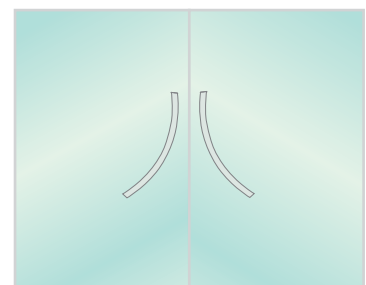
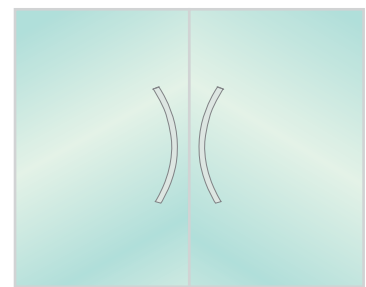
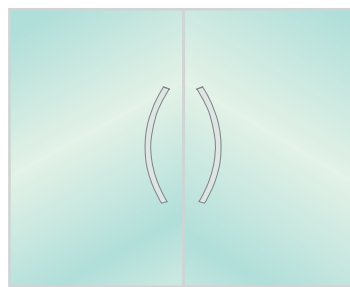


SIZE(mm)

L(Length)	L1(c/c)
800	425
1000	600
1200	800
1500	1020
1900	1200

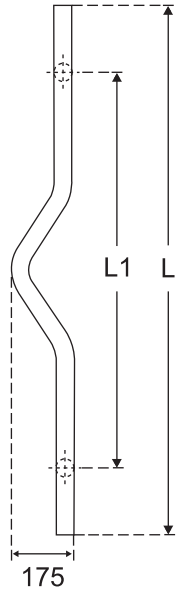


● Two tone finishes



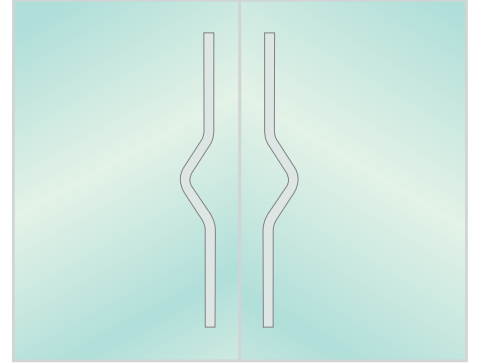
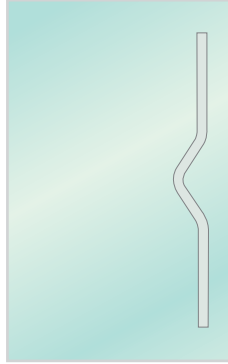
● Customer length acceptable.

## H21A

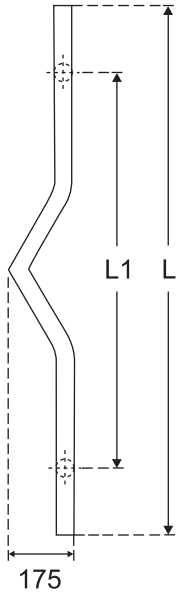


SIZE(mm)

L	L1(c/c)	D
800	600	32

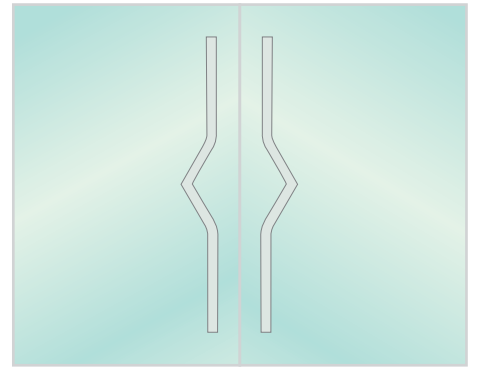


## H21B

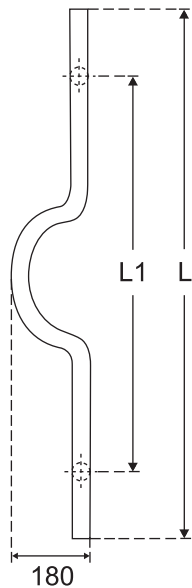


SIZE(mm)

L	L1(c/c)	D
800	600	32

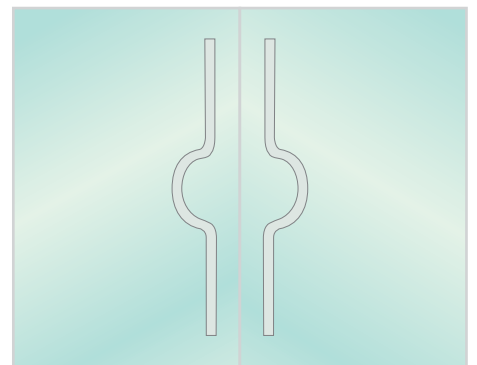
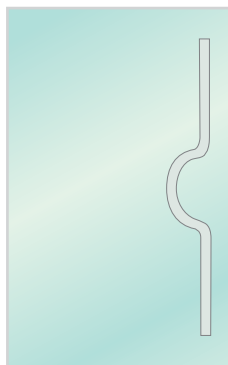


## H21C



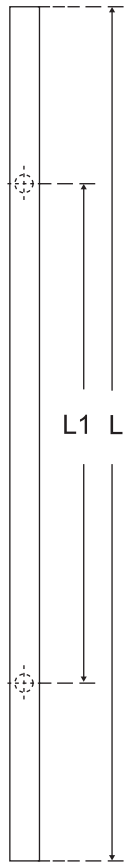
SIZE(mm)

L	L1(c/c)	D
800	600	32



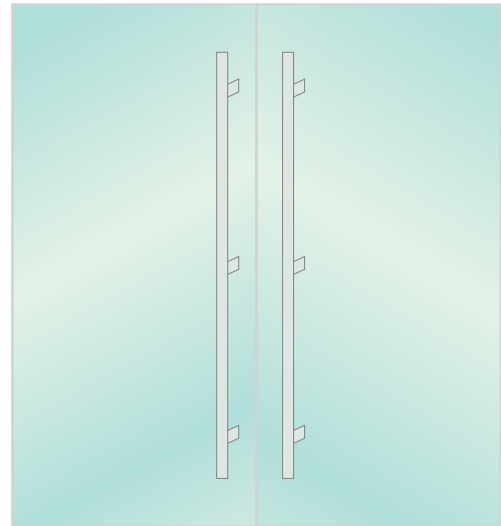


## H22



SIZE(mm)

L(length)	L1(c/c)	D
800	425	32
1000	600	32
1200	800	32
1500	1020	32
1900	800x800	32

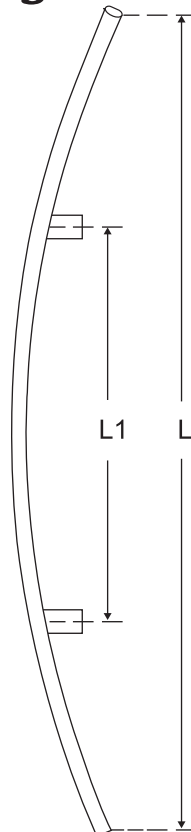
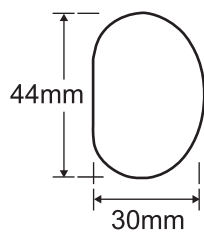


● Customer length acceptable.

## H23

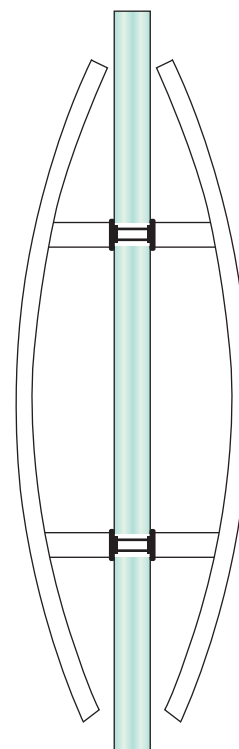


**D type tubing**

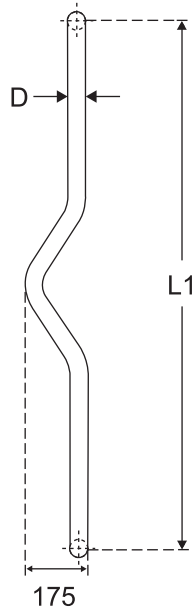


SIZE(mm)

L(length)	L1(c/c)
1000	600

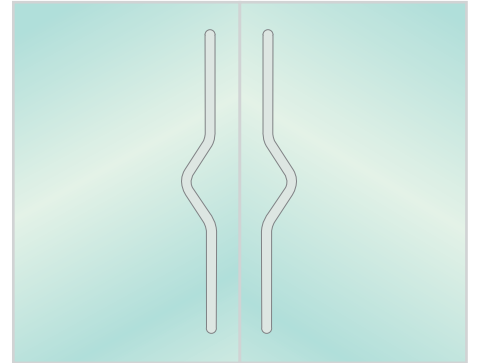


## H24A

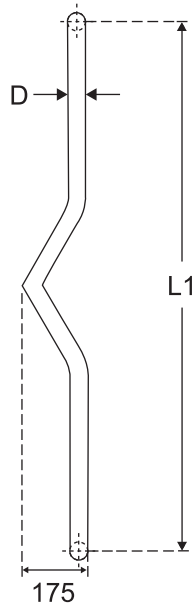


SIZE(mm)

L1(c/c)	D
600	32

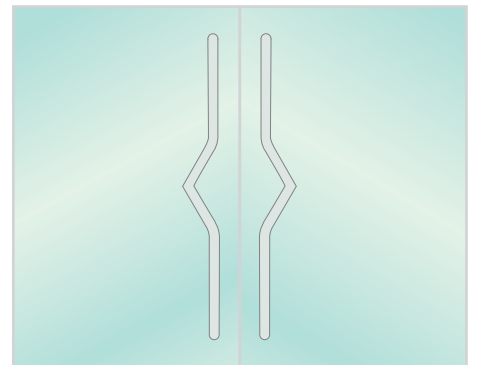


## H24B

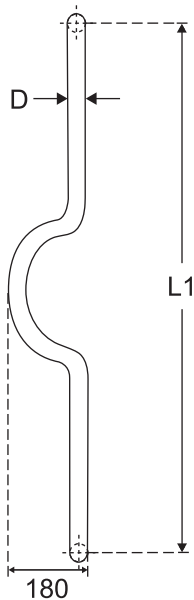


SIZE(mm)

L1(c/c)	D
600	32

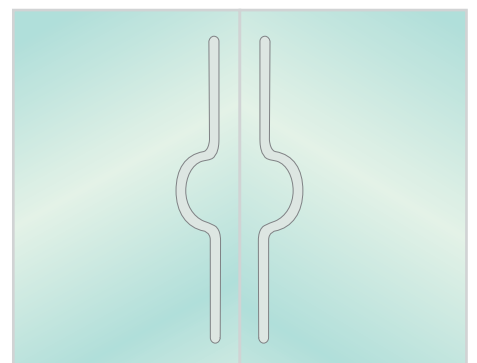


## H24C



SIZE(mm)

L1(c/c)	D
600	32



# Pull and Towel Bar Sets

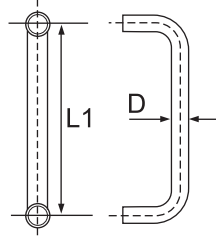


- All **GCC** Pull and Towel Bar Sets are constructed of heavy wall SUS 304 stainless steel tubing. Tubing Diameter: 19mm(3/4")
- Fits glass thickness from 6mm(1/4") to 12mm(1/2")
- Available Finishes: **PSS**: Polished Stainless Steel.

**SSS**: Satin Stainless Steel.

**TP**: Titanium plated. (PVD coated as 24k Gold color)

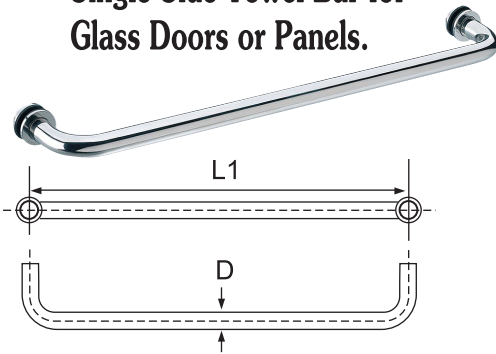
## H01



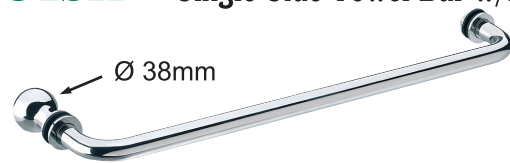
### SIZE(mm)

L1(C/C)mm	D m/m
150(6")	19(3/4")
200(8")	19(3/4")
250(10")	19(3/4")
305(12")	19(3/4")
450(18")	19(3/4")

## H01S • Single Side Towel Bar for Glass Doors or Panels.



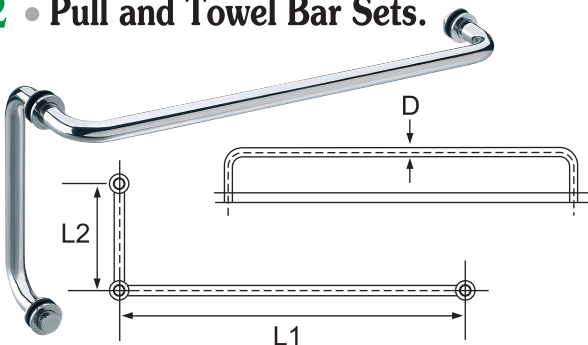
## H01SK • Single Side Towel Bar w/Knob.



### SIZE(mm)

L1(C/C)mm	D m/m
305(12")	19(3/4")
450(18")	19(3/4")
600(24")	19(3/4")

## H12 • Pull and Towel Bar Sets.



### SIZE(mm)

L1(C/C)mm	L2(C/C)mm	D m/m
305(12")	150(6")	19(3/4")
450(18")	200(8")	19(3/4")
600(24")	250(10")	19(3/4")

## H25SK • Single Side Towel Bar W/Knob.

### SIZE(mm)

L	L1(c/c)
500	450



## H25 • Pull and Towel Bar Sets.

### SIZE(mm)

L	L1(c/c)
500	450





In the field of architectural fittings for glass doors high quality and total design flexibility are essential for ease of installation, safety and functionality.

**GCC** full range of fittings are aesthetically designed and manufactured to provide practicality and security to tempered glass assemblies.

**GCC** will be happy to help your special design requirements, for any doubts, please contact your nearest **GCC** distributors for any technical assistance on parts and services, or contact us directly.

**GCC** reserves all rights to make product modifications or engineering changes without notification.



Unit 8/3 Selgar Ave  
Clovelly Park, SA 5042

**Phone:** 0429 933 583

**Email:** [sales@prestigeglassfittings.com.au](mailto:sales@prestigeglassfittings.com.au)

**Web:** [www.prestigeglassfittings.com.au](http://www.prestigeglassfittings.com.au)

**Notes:**